

CELEBRATING
75
YEARS
RED HEART YARNS 1936 - 2011

REDHEART.COM

RED HEART'S 75TH ANNIVERSARY

BIG GIVEAWAY

SEPTEMBER 1ST - OCTOBER 11TH

ENTER NOW FOR A CHANCE TO WIN

PRIZE INCLUDES

- \$75 of Red Heart Yarn Supplies
- AND**
- 1 Year subscription to Knitting Today! or Crochet Today!



75 = 12 WINNERS

ENTER TO WIN!

Have you ever wondered how your favorite yarn is made - right here in the USA? Enter now for your chance to win the

★ GRAND PRIZE ★

All-Expense Paid Trip for 2
to tour the Red Heart Mill
in Albany, GA
(Prize valued at \$1,500)



GEORGIA



Waterlily Centerpiece

Design by Nancy Weddle





Waterlily Filet Doily

Design by Rose Beckett

Waterlily Centerpiece & Waterlily Filet Doily

Waterlily Centerpiece

Design by Nancy Weddle

FINISHED SIZE:

Approximately 2½"-high × 6"-wide.

MATERIALS:

- Size 10 crochet cotton thread:
 - 150 yds. yellow
 - 50 yds. shaded green
- Fabric stiffener
- Plastic wrap
- Rust-proof straight pins
- No. 7 steel hook or hook needed to obtain gauge

GAUGE:

7 dc = 1"; 3 dc rows = 1".

BASIC STITCHES:

Ch, sl st, sc, dc.

LILY

Rnd 1: With yellow, ch 6, sl st in first ch to form ring, ch 1, sc in ring, ch 3, (sc in ring, ch 3) 5 times, join with sl st in first sc. (*6 sc, 6 ch sps made*)

Rnd 2: Ch 1, sc in first ch sp, ch 4, (sc in next ch sp, ch 4) around, join.

Rnd 3: (Sl st, ch 3, 3 dc) in first ch sp, ch 1, (4 dc in next ch sp, ch 1) around, join with sl st in top of ch 3. (*24 dc*)

Rnd 4: (Ch 3, dc) in first st, dc in next 2 sts, 2 dc in next st, ch 1, skip next ch sp, (2 dc in next st, dc in next 2 sts, 2 dc in next st, ch 1, skip next ch sp) around, join. (*36*)

Rnd 5: (Ch 3, dc) in first st, dc in next 4 sts, 2 dc in next st, ch 1, skip next ch sp, (2 dc in next st, dc in next 4 sts, 2 dc in next st, ch 1, skip next ch sp) around, join. (*48*)

Rnd 6: (Ch 3, dc) in first st, dc in next 6 sts, 2 dc in next st, ch 1,

skip next ch sp, (2 dc in next st, dc in next 6 sts, 2 dc in next st, ch 1, skip next ch sp) around, join. (*60*)

Rnd 7: (Ch 3, dc) in first st, dc in next 8 sts, 2 dc in next st, ch 1, skip next ch sp, (2 dc in next st, dc in next 8 sts, 2 dc in next st, ch 1, skip next ch sp) around, join. (*72*)

Rnds 8–10: Ch 3, dc in next 11 sts, ch 1, skip next ch sp, (dc in next 12 sts, ch 1, skip next ch sp) around, join.

Row 11: For **First Top Petal**, ch 3, dc in next 11 sts leaving last 60 sts unworked, turn. (*12*)

Rows 12–14: Ch 3, dc next 2 sts tog, dc in each st across to last 3 sts, dc next 2 sts tog, dc in last st, turn. (*10, 8, 6*)

Row 15: Ch 3, (dc next 2 sts tog) 2 times, dc in last st, turn. (*4*)

Row 16: Ch 3, skip next 2 sts, sl st in last st. Fasten off.

Row 11: For **Second Top Petal**, join yellow with sl st in next unworked st on rnd 10, ch 3, dc in next 11 sts leaving remaining sts unworked, turn. (*12*)

Rows 12–16: Repeat rows 12–16 of First Top Petal.

Rows 11–16: For **Next Top Petal**, repeat rows 11–16 of Second Top Petal.

Rnd 17: Fold Top Petals to inside of work, with right side facing you, working in sps between sts on rnd 5, join yellow with sc in sp between fourth and fifth st of first 8-dc group, (ch 10, sc in sp between fourth and fifth st of next 8-dc group) 5 times, ch 10, join with sl st in first sc. (*6 ch sps*)

Row 18: For **First Bottom Petal**, (sl st, ch 3, 17 dc) in first ch sp, turn. (*18 dc*)

Rows 19–22: Ch 3, dc in each st across, turn.

Rows 23–25: Ch 3, (dc next 2 sts tog) across with dc in last st, turn. (*10, 6, 4*)

Row 26: Ch 3, skip next 2 sts, sl st in

last st. Fasten off.

Row 18: For **Second Bottom Petal**, join yellow with sl st in next ch sp on rnd 17, ch 3, 17 dc in same ch sp, turn. (18 dc)

Rows 19–26: Repeat rows 19–26 of First Bottom Petal.

Rows 18–26: For **Next Bottom Petal**, repeat rows 18–26 of Second Bottom Petal in each remaining ch sp on rnd 17.

LILY PAD

Rnd 1: Working behind Petals, join shaded green with sc in any ch-1 sp on rnd 5 of Lily, ch 10, (sc in next ch-1 sp on rnd 5, ch 10) around, join with sl st in first sc. (6 ch sps made)

Rnd 2: Ch 1, (sc, ch 1, 15 dc, ch 1, sc) in each ch sp around, join.

Rnd 3: Ch 1, sc in first st, ch 1, dc in next 15 sts, ch 1, sc in next st, (sc in next st, ch 1, dc in next 15 sts, ch 1, sc in next st) around, join.

Rnd 4: Ch 3, dc in next ch sp, dc in next 15 sts, dc in next ch sp, dc in next st, (dc in next st, dc in next ch sp, dc in next 15 sts, dc in next ch sp, dc in next st) around, join with sl st in top of ch 3.

Rnds 5–7: Ch 3, dc in each st around, join. At end of last rnd, fasten off.

FINISHING

Stiffen according to manufacturer's instructions. Squeeze out excess liquid. Roll plastic wrap into a ball and place inside of Lily; place on flat surface covered with plastic wrap, pin to shape. Remove plastic wrap and pins when completely dry. □□

Waterlily Filet Doily

Design by Rose Beckett

FINISHED SIZE:

Approximately 10" x 15".

MATERIALS:

- 563 yds. White DMC® Cebelia® or size 30 crochet cotton thread
- No. 10 steel hook or hook needed to obtain gauge

GAUGE:

15 dc = 1"; 13 dc rows = 2".

BASIC STITCHES:

Ch, sc, dc.

SPECIAL STITCHES:

For **block**, dc in next 3 sts or chs.

For **mesh**, ch 2, skip next 2 sts or chs, dc in next st.

For **double mesh**, ch 5, skip next 5 dc or next lacet, dc in next st.

For **lacet**, ch 2, sc in next ch sp, ch 2, dc in next st, **or**, ch 2, skip next 2

sts, sc in next st, ch 2, skip next 2 sts, dc in next st.

NOTE:

Work all rows in **back lps** (see *Stitch Guide*).

DOILY

Row 1: Ch 231, dc in fourth ch from hook, dc in each ch across, turn. (229 dc made)

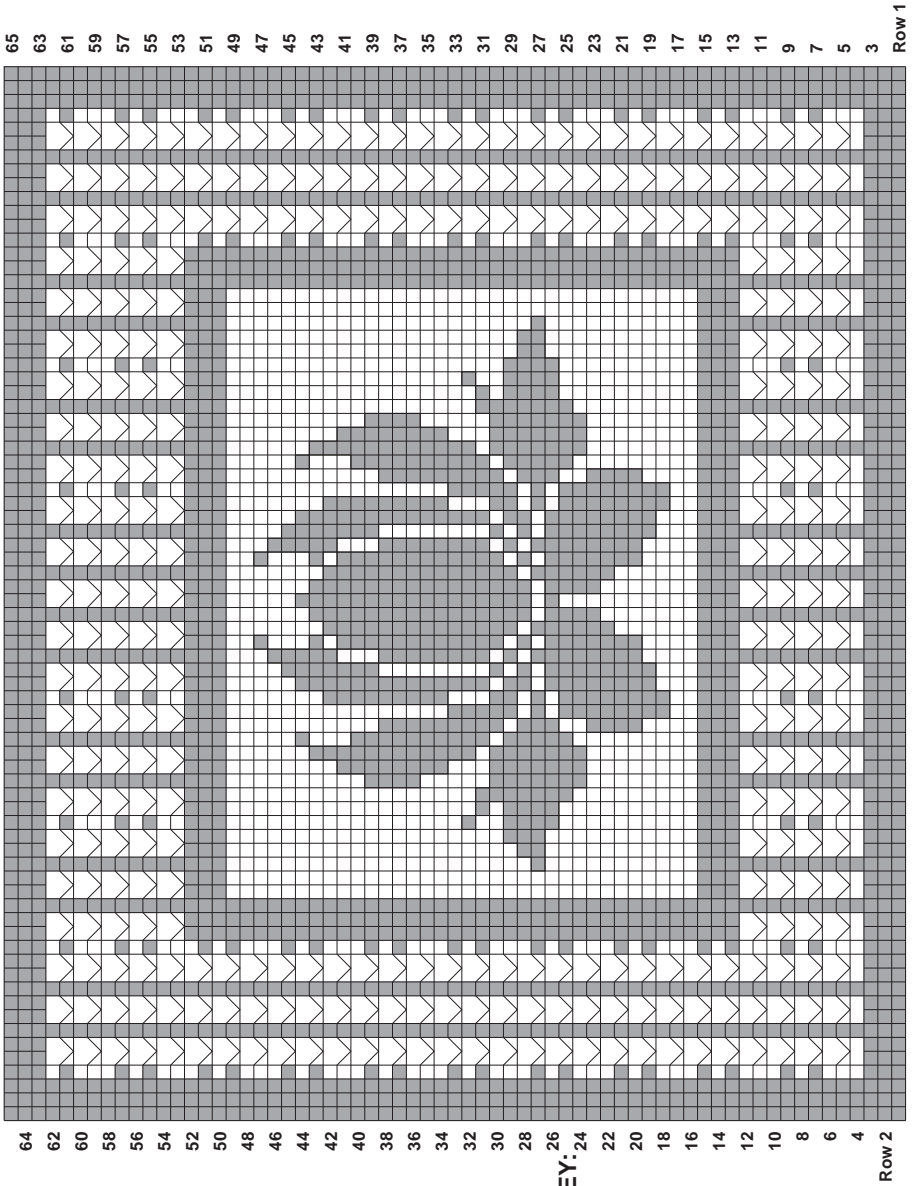
Rows 2–3: Ch 3, dc in each st across, turn.

NOTE: See *Special Stitches to work sts in following rows*.

Row 4: Ch 3, 3 blocks, mesh, (double mesh, block, double mesh, block, double mesh, mesh) 3 times, (double mesh, block) 4 times, (double mesh, mesh, double mesh, block, double mesh, block) 3 times, double mesh, mesh, 3 blocks, turn.

Rows 5–65: Ch 3, work according to graph, turn. At end of last row, fasten off. □□

WATERLILY FILET GRAPH



WATERLILY FILET KEY: 24

-  = BLOCK
-  = MESH
-  = DOUBLET
-  = MESH

Which of these *kit clubs* would YOU enjoy the most?

BEADING

Learn the latest **BEADING** tips and techniques!



Simply Beads
Kit-of-the-Month Club®

Learn More!

KIDS CRAFTS

Fun, creative craft kits designed **JUST FOR GIRLS!**



Creative Girls Club

Learn More!

CARD MAKING

Get tips, techniques, inspiration and **CARD MAKING** materials every month!



CardMaker
Kit-of-the-Month Club

Learn More!

CROCHET & KNITTING

Double your fun with instructions for both **CROCHET & KNIT!**



Katie's Hook & Needle
Kit Club

Learn More!

PAINTING

Become an accomplished watercolor and acrylic **ARTIST** in no time!



Creative Painter

Learn More!

CRAFTS

Explore many **CRAFTING** techniques!



Creative Woman
Kit-of-the-Month Club

Learn More!

HOLIDAY CRAFTS

Make beautiful, unique **ORNAMENTS** each month!



Christmas Ornament
Kit of the Month Club

Learn More!

KIDS WOODWORKING

Real **HAMMER AND WOOD KITS** designed just for kids!



YOUNG WOODWORKERS
KIT CLUB

Learn More!

QUILTING

Fabulous **FABRICS** that will inspire you to create!



Creative Quilters Fabric Club

Learn More!

Visit
KitClubCentral.com