

CELEBRATING  
75  
YEARS  
RED HEART YARNS 1936 - 2011

# REDHEART.COM

## RED HEART'S 75TH ANNIVERSARY

# BIG GIVEAWAY

SEPTEMBER 1ST - OCTOBER 11TH

ENTER NOW FOR A CHANCE TO WIN

## PRIZE INCLUDES

- \$75 of Red Heart Yarn Supplies
- AND**
- 1 Year subscription to Knitting Today! or Crochet Today!



**75** = 12 WINNERS

**ENTER TO WIN!**

Have you ever wondered how your favorite yarn is made - right here in the USA? Enter now for your chance to win the

# ★ GRAND PRIZE ★

All-Expense Paid Trip for 2  
to tour the Red Heart Mill  
in Albany, GA  
(Prize valued at \$1,500)



GEORGIA



# Animal Afghans – Rufus Rabbit

Designed by Sandra Miller Maxfield

## SIZE:

40" x 45" {101.6 cm x 114.3 cm}.

## MATERIALS:

Worsted-weight yarn: (18 oz. {510 g} white; 8 oz. {227 g} lilac; 2 1/2 oz. {71 g} each blue, green, lt. rose, red and yellow; small amount black); Tapestry needle; H {5-mm} crochet hook or size needed to obtain gauge

## GAUGE:

7 dc = 2" {5.1 cm}; 9 dc rows = 5" {12.7 cm}.

## SKILL LEVEL:

Average

## NOTES:

When changing colors (see illustration), always drop yarn to wrong side of work. Use a separate skein of yarn for each color section. Do not carry yarn across from one section to another. Fasten off colors at end of each color section.

Beginning ch-3 is used and counted as first st of each row.

Work odd-numbered graph rows from right to left and even-numbered rows from left to right.

Each square on graph equals 2 dc.

## INSTRUCTIONS

### CENTER

Row 1: With white, ch 106, dc in 4th ch from hook, dc in each ch across, turn (104 dc).

Rows 2-3: Ch 3, dc in each st across, turn.

Row 4: For row 4 of Rabbit Graph, ch 3, dc in next 41 sts changing to lilac in last st made, dc in next 6 sts



changing to white in last st made, dc in last 56 sts, turn.

Rows 5-63: Ch 3, dc in each st across changing colors according to graph, turn. At end of last row, fasten off.

### BORDER BLOCKS (make 7 each green, red, blue and yellow)

Row 1: Ch 20, dc in 4th ch from hook, dc in each ch across, turn (18 dc).

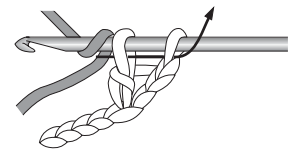
Rows 2-9: Ch 3, dc in each st across, turn. At end of last row, fasten off.

Easing to fit, sew around outer edge of Center according to Border Block Diagram.

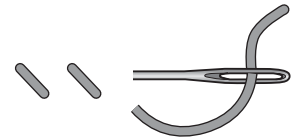
With black, using Straight Stitch (see illustration), embroider eyebrows and mouth lines according to graph.

With green, using Straight Stitch, embroider flower stem according to graph.

### DOUBLE CROCHET COLOR CHANGE



### STRAIGHT STITCH

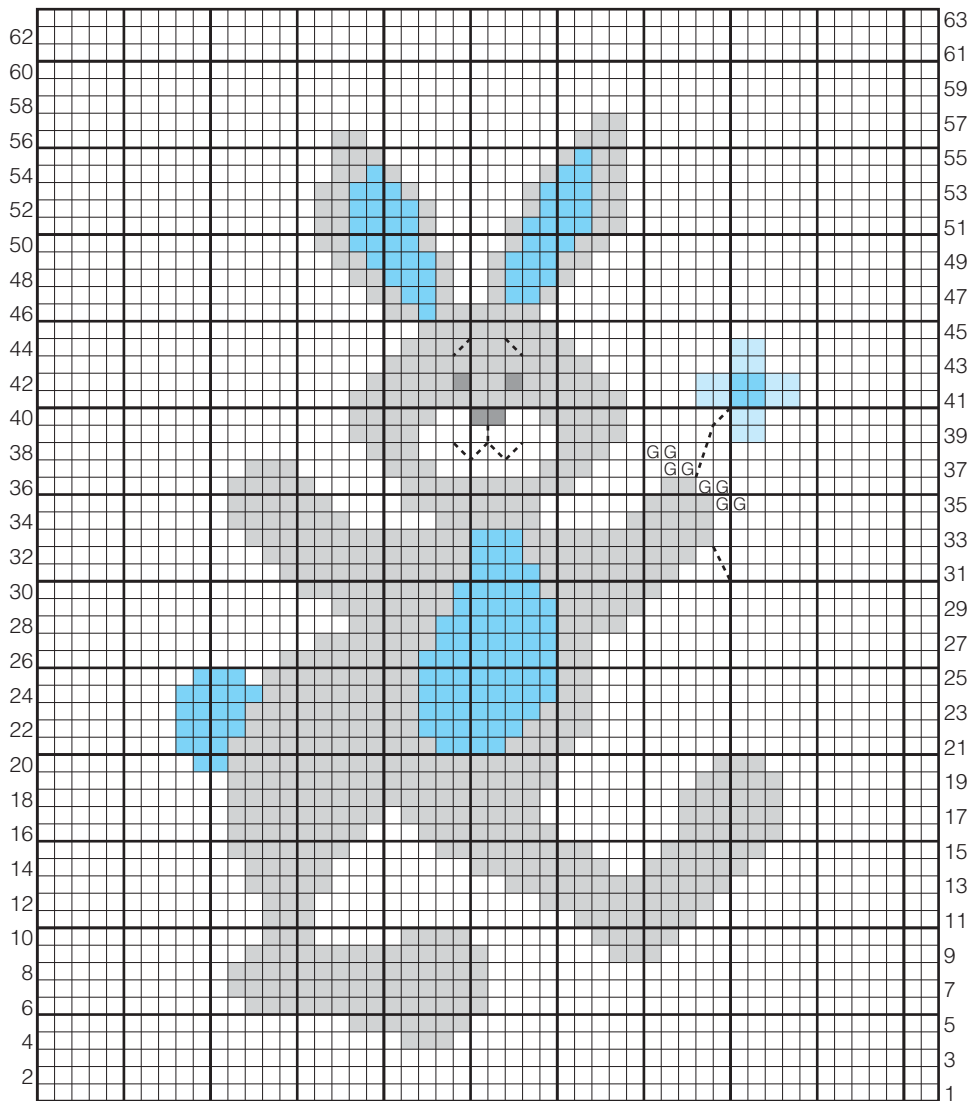


### BORDER BLOCK DIAGRAM

Green	Red	Blue	Yellow	Green	Red	Blue	Yellow
Yellow							Green
Blue							Red
Red							Blue
Green							Yellow
Yellow							Green
Blue							Red
Red	Green	Yellow	Blue	Red	Green	Yellow	Blue

- = White
- = Green
- = Lilac
- = Yellow
- = Lt. Rose
- = Black

### RABBIT GRAPH



Each square on graph = 2 dc.



# Which of these *kit clubs* would YOU enjoy the most?

**BEADING**

Learn the latest **BEADING** tips and techniques!



*Simply Beads*  
Kit-of-the-Month Club®

**Learn More!**

**KIDS CRAFTS**

Fun, creative craft kits designed **JUST FOR GIRLS!**



*Creative Girls Club*

**Learn More!**

**CARD MAKING**

Get tips, techniques, inspiration and **CARD MAKING** materials every month!



**CardMaker**  
Kit-of-the-Month Club

**Learn More!**

**CROCHET & KNITTING**

Double your fun with instructions for both **CROCHET & KNIT!**



*Katie's Hook & Needle*  
Kit Club

**Learn More!**

**PAINTING**

Become an accomplished watercolor and acrylic **ARTIST** in no time!



**Creative Painter**

**Learn More!**

**CRAFTS**

Explore many **CRAFTING** techniques!



*Creative Woman*  
Kit-of-the-Month Club

**Learn More!**

**HOLIDAY CRAFTS**

Make beautiful, unique **ORNAMENTS** each month!



*Christmas Ornament*  
Kit of the Month Club

**Learn More!**

**KIDS WOODWORKING**

Real **HAMMER AND WOOD KITS** designed just for kids!



**YOUNG WOODWORKERS**  
KIT CLUB

**Learn More!**

**QUILTING**

Fabulous **FABRICS** that will inspire you to create!



*Creative Quilters*  
Fabric Club

**Learn More!**

Visit  
[KitClubCentral.com](http://KitClubCentral.com)