

CELEBRATING
75
YEARS
RED HEART YARNS 1936 - 2011

REDHEART.COM

RED HEART'S 75TH ANNIVERSARY

BIG GIVEAWAY

SEPTEMBER 1ST - OCTOBER 11TH

ENTER NOW FOR A CHANCE TO WIN

PRIZE INCLUDES

- \$75 of Red Heart Yarn Supplies
- AND**
- 1 Year subscription to Knitting Today! or Crochet Today!



75 = 12 WINNERS

ENTER TO WIN!

Have you ever wondered how your favorite yarn is made - right here in the USA? Enter now for your chance to win the

★ GRAND PRIZE ★

All-Expense Paid Trip for 2
to tour the Red Heart Mill
in Albany, GA
(Prize valued at \$1,500)



GEORGIA



Quack Cardigan

By Ann Smith for Monsanto's
Designs for America Program

DIRECTIONS

Intermediate

SIZE

Sizes: 2 (4, 6)

Finished chest: 27 (29, 31)
inches

Finished length: 14 (15, 16)
inches

MATERIALS

- Sport weight yarn in 50-gram balls*:
 - 2 (3-3) skeins No 6016 light navy
 - 1 (2-2) skeins No 60053 plumberry
 - 1 skein No 60410 sandpiper heather
 - 1 skein No 6003 yellow
- Crochet hook size F/5
- 4 matching 5/8-inch buttons
- Yarn needle

*Brunswick Fore 'n Aft Sport 100-percent Monsanto acrylic yarn was used in the sample project.

GAUGE

15 dc = 4 inches; 7 dc rows =
4 inches

PATTERN NOTES

Weave in loose ends as work progresses.

To change color in dc, work last st before color change until 2 lps rem on hook, with new color, yo, draw through rem 2 lps on hook.

To change color in sc, with present color draw up a lp in last st before color change, with new color, yo, draw through rem 2 lps on hook.

Cardigan is worked in 1 piece to the duck motifs.

When working the

graphed duck section, use separate balls of yarn colors across.

BODY

Row 1 (Right side): Beg at bottom edge of sweater with plumberry yarn, ch 104 (112-120), dc in 4th ch from hook, [with light navy yarn, dc in next ch, with plumberry yarn, dc in next 2 chs] rep across, turn. (102-110-118)

Row 2 (Wrong side): With plumberry yarn, ch 3 (first dc), dc in next dc, [with light navy yarn, dc in next dc, with plumberry, dc in next 2 dc] rep across, turn.

Row 3 (Right side): Rep Row 2, fasten off light navy yarn.

Row 4 (Wrong side): With plumberry yarn, ch 1, sc in each dc across, decreasing 2 (0-3) sc evenly sp across, turn. (100-110-115)

Row 5 (Right side): Ch 1, working in front lps only, sl st in each st across, fasten off, do not turn.

Row 6 (Right side): Working in rem free lps of Row 4, attach light navy in first st, ch 3, dc in next 2 sts, [with sandpiper heather, dc in next 2 sts, with light navy yarn, dc in next 3 sts] rep across, turn.

Rows 7-9: Using Graph 1 as a guideline, with light navy and sandpiper heather yarns, dc in each st across, turn.

At end of Row 9, fasten off yarns.

Row 10 (Wrong side): Attach plumberry yarn in first st, ch 1, sc in each dc across, increasing 2 (0-3) sts evenly sp across, turn. (102-110-118)

Row 11 (Right side): Ch 1, working in front lps only, sl st in each st across, fasten off, do not turn.

RIGHT FRONT

Row 1 (Right side): Attach sandpiper heather yarn in rem free lp of Row 10, ch 1, sc in same st as beg ch-1, sc in next 24 (26-28) sts, turn. (25-27-29)

Row 2: Ch 1, sc in each sc across, turn.

Row 3: Ch 1, sc in next 4 (5-6) sc,

with yellow, sc in next 5 sc, with sandpiper heather, sc in next 8 sc, with yellow sc in next 5 sc, with sandpiper heather, sc in next 3 (4-5) sc, turn.

Beg with Row 4 and keeping 1 (2-3) sts along each edge in sandpiper heather, complete Graph 2.

At the end of last rep, fasten off both yarns.

Row 4: With wrong side facing, attach plumberry in first st, ch 1, sc in each 25 (27-29) sts across, turn.

Row 5: Working in front lps only, sl st in each st across, fasten off, do not turn.

Neckline shaping

Row 1 (Right side): Working in rem free lps of Row 4, attach light navy yarn in first st, ch 3 (first dc), dc in next 24 (26-28) sts, turn.

Row 2: Ch 3, dc in next 7 (9-11) sts, bpdcc around next st, dc in next 8 sts, bpdcc around next st, dc in rem 7 sts, turn.

Row 3: Ch 3, dec 1 dc over next 2 sts (neckline edge), dc in next 4 sts, fpdccc around post st, dc in next 8 sts, fpdccc around post st, dc in next 8 (10-12) sts, turn.

Row 4: Ch 3, dc in next 7 (9-11) sts, bpdcc around post st, dc in next 8 sts, bpdcc around post st, dc in each dc to within last 3 sts, dec 1 dc over next 2 sts, dc in next st, turn.

Work in established pattern of dc sts, post sts across, decreasing 1 st at neckline edge every row until 17 sts rem. At the end of last rep, fasten off.

BACK

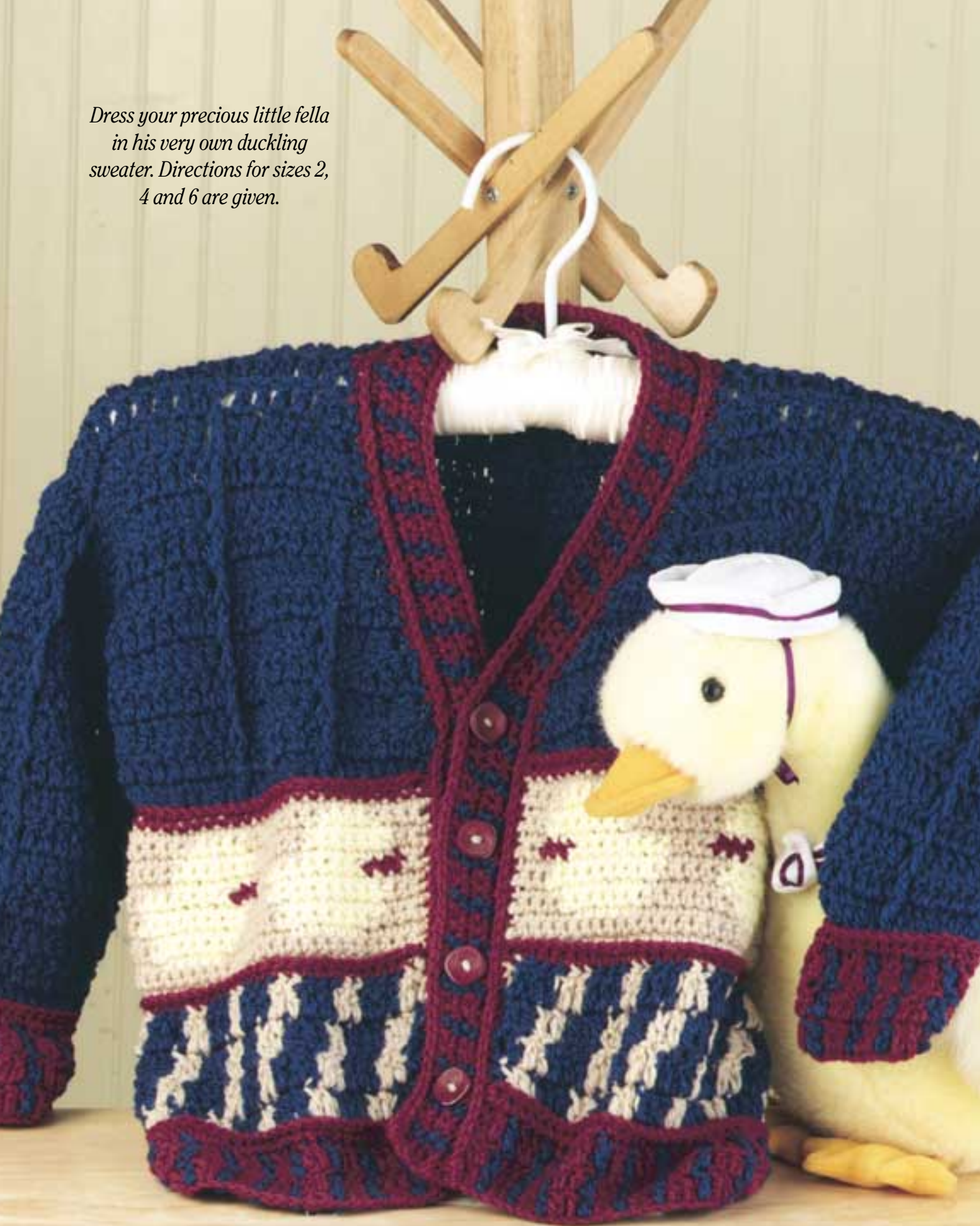
Row 1 (Right side): Attach sandpiper heather yarn in rem free lp of Row 10 next to right front, ch 1, sc in next 52 (56-60) sts, turn.

Row 2: Ch 1, sc in each sc across, turn.

Beg with Row 3, follow Graph 2 to complete duck graphed section.

Row 4: With wrong side facing, attach plumberry, ch 1, sc in each st across, turn.

*Dress your precious little fella
in his very own duckling
sweater. Directions for sizes 2,
4 and 6 are given.*



Row 5: Working in front lps only, sl st in each st across, fasten off, do not turn.

Row 6: With right side facing, attach light navy yarn in rem free lp of Row 4, ch 3, dc in each rem free lp across, increasing 1 dc across, turn. (53-57-61)

Row 7 (Wrong side): Ch 3, dc in next 7 (9-11) sts, [bpdc around next st, dc in next 8 sts] 4 times, bpdc around next st, dc in next 8 (10-12) sts, turn.

Row 8 (Right side): Ch 3, dc in next 7 (9-11) sts, [fpdc around post st, dc in next 8 sts] 4 times, fpdc around next st, dc in next 8 (10-12) sts, turn.

Continue to rep Rows 7 and 8 until back measures same length as right front, fasten off.

LEFT FRONT

Work as for right front, using left front duck graph and reversing neckline shaping.

SLEEVES (make 2)

Beg at cuff with plumberry yarn, ch 28, work body Rows 1-5 on 26 sts.

Row 1 (Right side): Attach light navy yarn in rem free lp of Row 4, ch 3, dc in each st across, turn. (26)

Row 2: Ch 3, 2 dc in next st, dc in next 6 sts, bpdc around next st, dc in next 8 sts, bpdc around next st, dc in each dc across to within last 2 sts, 2

dc in next st, dc in last st, turn.

Row 3: Ch 3, 2 dc in next st, dc in each dc, fpdc around each post st to within last 2 sts, 2 dc in next st, dc in next st, turn.

Row 4: Ch 3, 2 dc in next st, dc in each dc, bpdc around each post st to within last 2 sts, 2 dc in next st, dc in next st, turn.

Row 5: Ch 3, 2 dc in next st, [fpdc around next st, dc in next 8 sts] 3 times, fpdc around next st, 2 dc in next st, dc in next st, turn.

Row 6: Ch 3, 2 dc in next st, dc in each dc and bpdc around each post st across to within last 2 sts, 2 dc in next st, dc in next st, turn.

Continue in established pattern, inc 1 dc in 2nd st and next-to-last st of each row, dc in each dc and post st around each post st until there are a total of 48 (52-56) sts across. Work even in pattern with no inc sts until sleeve measures 9½ (10½-12) inches. At the end of last rep, fasten off.

ASSEMBLY

Sew shoulder seams. Place markers 7 (7½-8) inches down each side seam. Sew sleeves into armhole openings, sew sleeve and side seams.

FRONT BANDS

Row 1 (Right side): Attach plumberry yarn at right front bottom of sweater, ch 1, sc evenly sp up right

front, around neckline and down left front, ending with a multiple of 3 sts, plus 2, turn.

Row 2: Working in back lps only, sl st in each st across, turn.

Row 3: Working in rem free lps of Row 1, ch 1, sc in next 2 sts, [with light navy yarn, sc in next st, with plumberry yarn, sc in next 2 sts] rep across, turn.

Row 4: With plumberry yarn, ch 1, sc in next 2 sts, [with light navy yarn, sc in next st, with plumberry yarn, sc in next 2 sts] rep across, turn.

Row 5: With plumberry yarn, ch 1, sc in next 2 sts, [with light navy yarn, sc in next st, with plumberry yarn, sc in next 2 sts] rep across to within rem 36 sts of left front, work buttonholes, *with light navy yarn, sc in next st, ch 2, sk 2 plumberry sts, sc in next st, with plumberry yarn, sc in next 2 sts, with light navy yarn, sc in next st, with plumberry yarn, sc in next 2 sts, rep from * 3 more times, turn. (4 buttonholes)

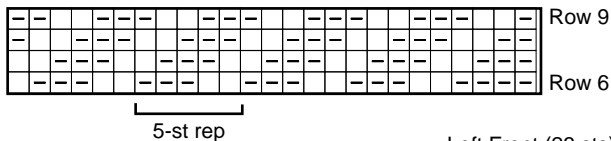
Row 6: Rep Row 4.

Row 7: With plumberry yarn only, sc in each sc across, turn.

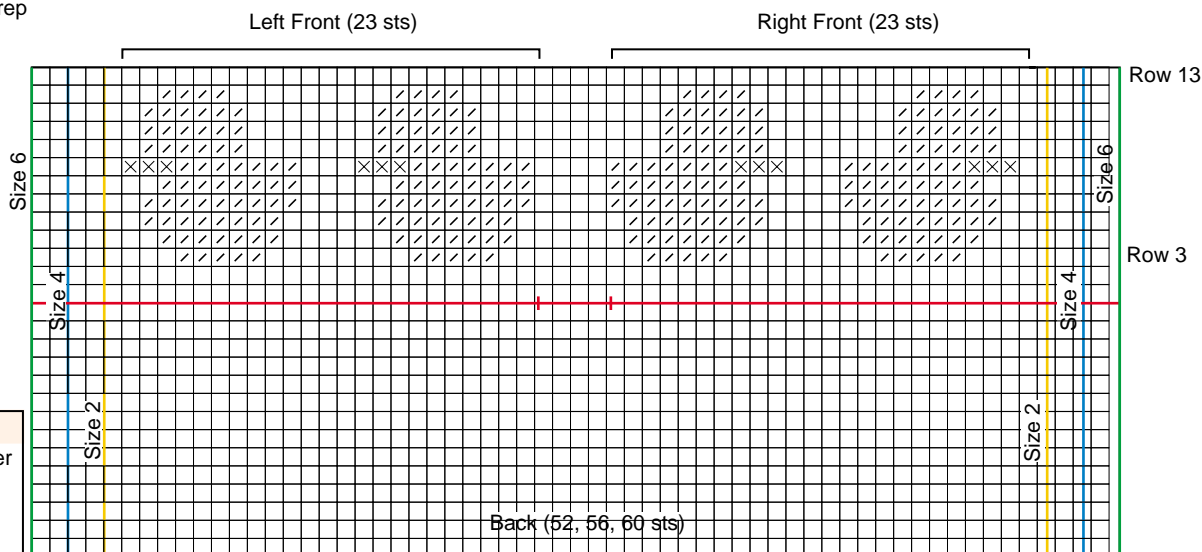
Row 8: Ch 1, working in back lps only, sl st in each st across, fasten off.

Sew buttons on the band opposite buttonholes. >✂

Graph 1
Zigzag Portion



Graph 2



COLOR KEY

- Sandpiper heather
- Light navy
- Plumberry
- Yellow

Which of these *kit clubs* would YOU enjoy the most?

BEADING

Learn the latest **BEADING** tips and techniques!



Simply Beads
Kit-of-the-Month Club®

Learn More!

KIDS CRAFTS

Fun, creative craft kits designed **JUST FOR GIRLS!**



Creative Girls Club

Learn More!

CARD MAKING

Get tips, techniques, inspiration and **CARD MAKING** materials every month!



CardMaker
Kit-of-the-Month Club

Learn More!

CROCHET & KNITTING

Double your fun with instructions for both **CROCHET & KNIT!**



Katie's Hook & Needle
Kit Club

Learn More!

PAINTING

Become an accomplished watercolor and acrylic **ARTIST** in no time!



Creative Painter

Learn More!

CRAFTS

Explore many **CRAFTING** techniques!



Creative Woman
Kit-of-the-Month Club

Learn More!

HOLIDAY CRAFTS

Make beautiful, unique **ORNAMENTS** each month!



Christmas Ornament
Kit of the Month Club

Learn More!

KIDS WOODWORKING

Real **HAMMER AND WOOD KITS** designed just for kids!



YOUNG WOODWORKERS
KIT CLUB

Learn More!

QUILTING

Fabulous **FABRICS** that will inspire you to create!



Creative Quilters Fabric Club

Learn More!

Visit

KitClubCentral.com